

# Eastern Shawnee History Project

How to Use the

**Flash Drive**



# Presentation Tin



# Open Presentation Tin



# 8.0 GB Flash Drive



# Remove Cap from Flash Drive





# Insert Flash Drive into USB Port



Left click on the Start Button



Monday, September 19, 2016

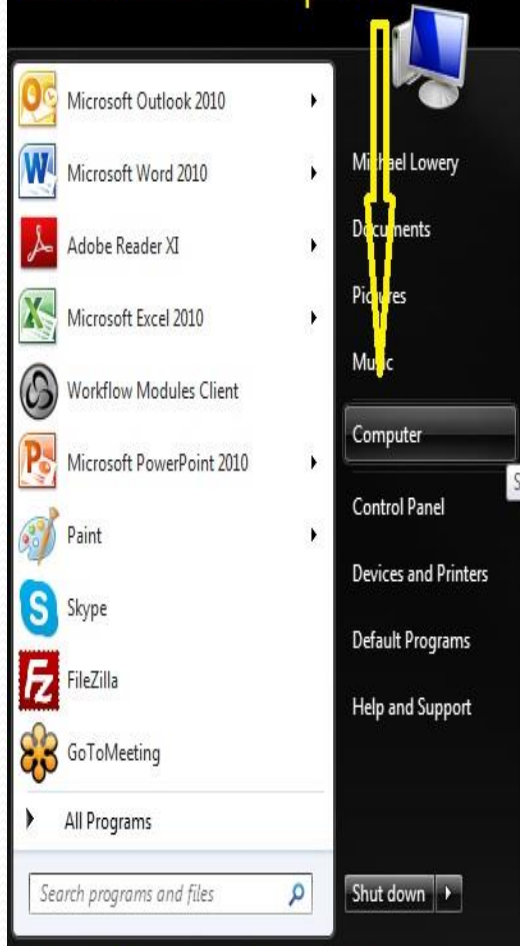
Location: Indigo Sky Casino

Start Time: 9 am

 **SHAWNEE HISTORY SUMMIT**



Left click on Computer



See the disk drives and other hardware connected to your computer.

Monday, September 19, 2016

Location: Indigo Sky Casino

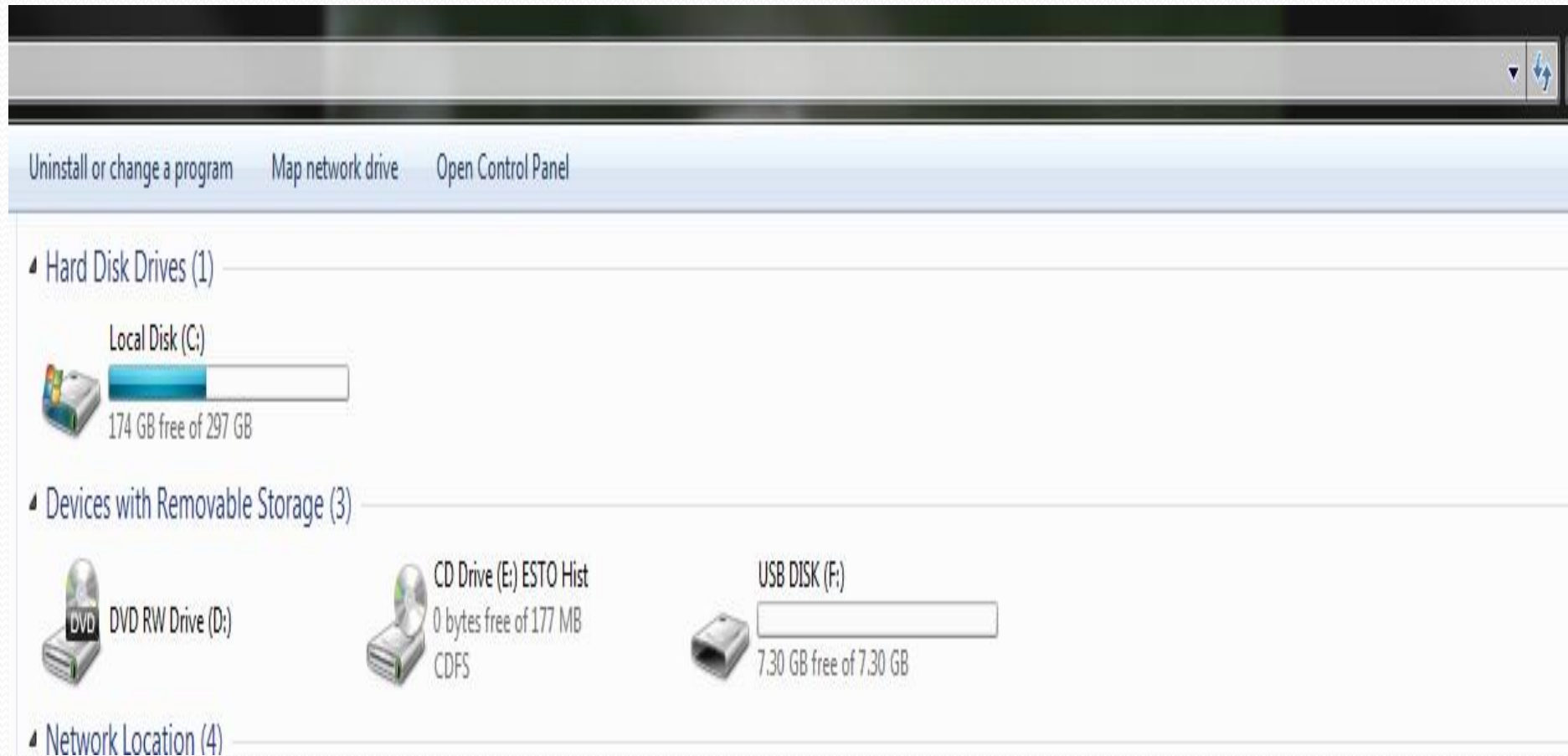
Start Time: 9 am



SHAWNEE HISTORY SUMMIT



# Folders on Screen



Uninstall or change a program

Map network drive

Open Control Panel

#### Hard Disk Drives (1)

Local Disk (C:)



174 GB free of 297 GB

#### Devices with Removable Storage (3)



DVD

DVD RW Drive (D:)



CD Drive (E:) ESTO Hist  
0 bytes free of 177 MB  
CDFS



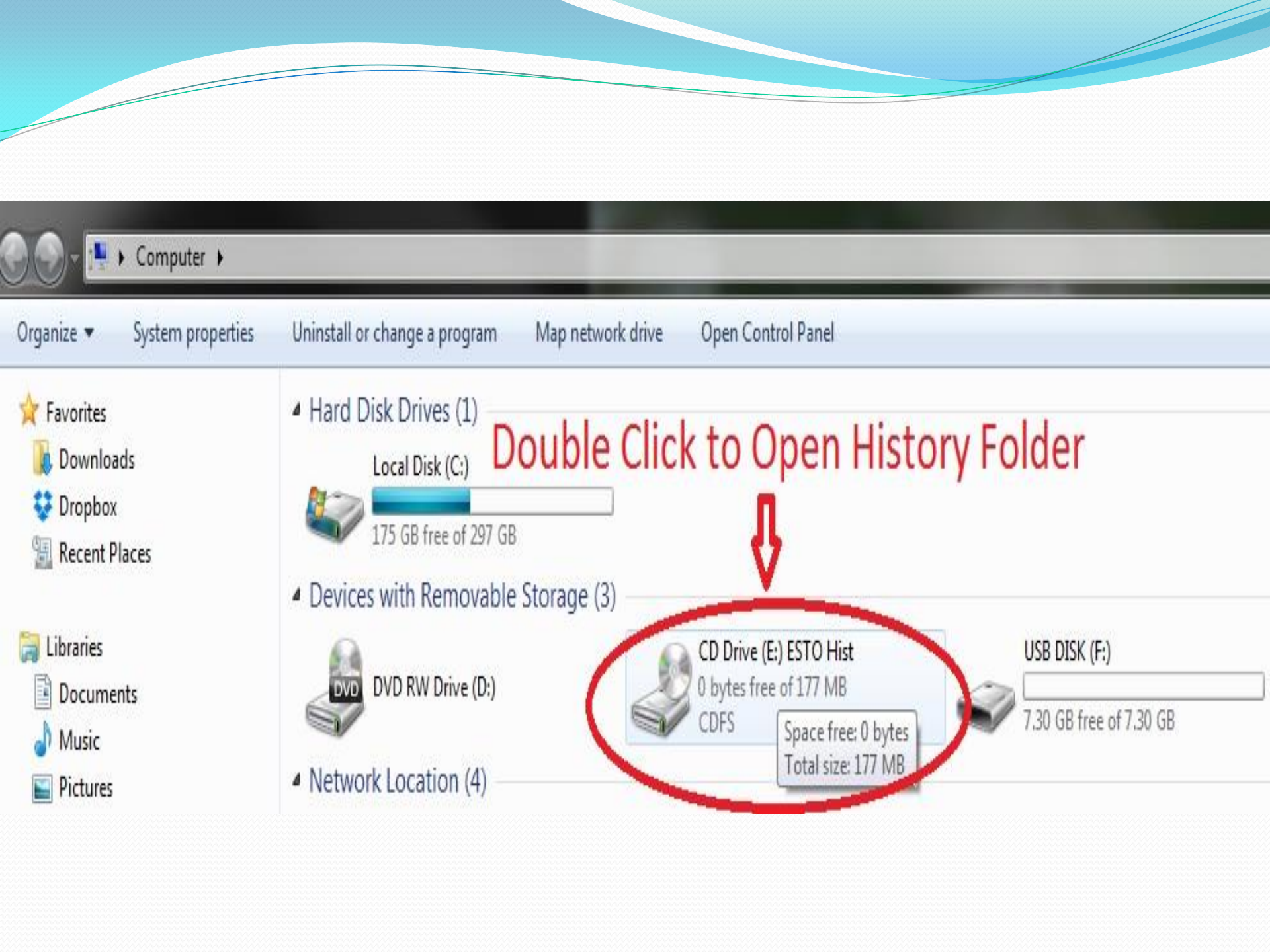
USB DISK (F:)



7.30 GB free of 7.30 GB

#### Network Location (4)

Free Storage

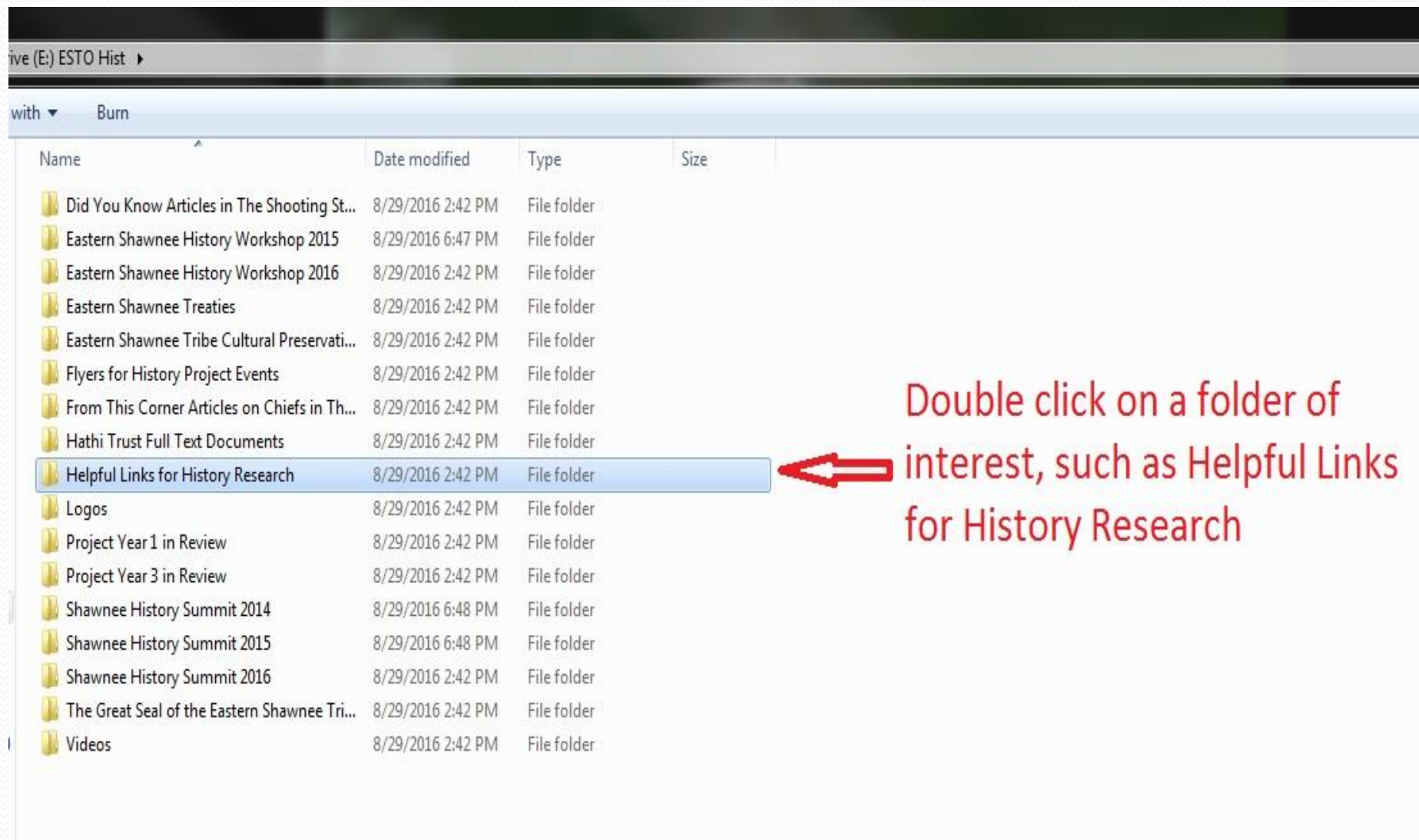


Double Click to Open History Folder



Drive (E:) ESTO Hist ▶				
Burn				
Name	Date modified	Type	Size	
Did You Know Articles in The Shooting St...	8/29/2016 2:42 PM	File folder		
Eastern Shawnee History Workshop 2015	8/29/2016 6:47 PM	File folder		
Eastern Shawnee History Workshop 2016	8/29/2016 2:42 PM	File folder		
Eastern Shawnee Treaties	8/29/2016 2:42 PM	File folder		
Eastern Shawnee Tribe Cultural Preservati...	8/29/2016 2:42 PM	File folder		
Flyers for History Project Events	8/29/2016 2:42 PM	File folder		
From This Corner Articles on Chiefs in Th...	8/29/2016 2:42 PM	File folder		
Hathi Trust Full Text Documents	8/29/2016 2:42 PM	File folder		
Helpful Links for History Research	8/29/2016 2:42 PM	File folder		
Logos	8/29/2016 2:42 PM	File folder		
Project Year 1 in Review	8/29/2016 2:42 PM	File folder		
Project Year 3 in Review	8/29/2016 2:42 PM	File folder		
Shawnee History Summit 2014	8/29/2016 6:48 PM	File folder		
Shawnee History Summit 2015	8/29/2016 6:48 PM	File folder		
Shawnee History Summit 2016	8/29/2016 2:42 PM	File folder		
The Great Seal of the Eastern Shawnee Tri...	8/29/2016 2:42 PM	File folder		
Videos	8/29/2016 2:42 PM	File folder		


History Project Folders





re (E:) ESTO Hist ► Helpful Links for History Research

Reader XI ▼ Print Burn

Name	Date modified	Type	Size
 Links to Websites, Webinars, and Libraries	8/23/2016 3:00 AM	Adobe Acrobat D...	234 KB

Double click on the file



### Links to Websites

Eastern Shawnee Tribe of Oklahoma Home Page

<http://www.estoo-nsn.gov/>

Eastern Shawnee Tribe of Oklahoma History Website

<http://history.estoo-nsn.gov/>  as the history website.

Eastern Shawnee Tribe of Oklahoma Digital Library

<http://www.ohiomemory.org/cdm/landingpage/collection/p16007coll27>

## ABOUT THE GRANT



# Eastern Shawnee Tribe of Oklahoma

## A Search For History



Search

## OUR GREAT CHIEFS

- [Pictures and History of our Chiefs](#)


## CATEGORIES

- [Quotes](#)
- [Webinars](#)


## About the Eastern Shawnee Tribe

The Eastern Shawnee Tribe of Oklahoma is one of three (3) federally-recognized Shawnee tribes: the Eastern Shawnee on the Oklahoma-Missouri border near Wyandotte, OK; the Absentee Shawnee near Shawnee, OK; and the Shawnee Tribe in Miami, OK. These three tribes were recognized as autonomous nations during the Indian removal era. Prior to that, most archaeologists and historians agree their original homeland was the middle Ohio Valley, between modern Louisville, Kentucky, and West Virginia.

The Shawnees once lived throughout the region east of the Mississippi River. The areas of their occupation centered around today's states of Alabama, the Carolinas, Delaware, Illinois, Indiana, Kentucky, Michigan, Pennsylvania, Tennessee, & the Virginias. Their historic geographical territories were mountainous regions, dense forests, and scattered prairies. Because of their geographic location and the focus of the subsistence pursuits, the Shawnee People are generally known as Eastern Woodlands Indians. Their loss of their homeland has given the Shawnee the reputation of being wanderers, but this was by necessity, not choice.



**Monday, September 19, 2016**  
Location: Indigo Sky Casino  
Start Time: 9 am

 **SHAWNEE HISTORY SUMMIT**

Left click on the arrow at the bottom right



9:53 AM  
9/9/2016



**Monday, September 19, 2016**

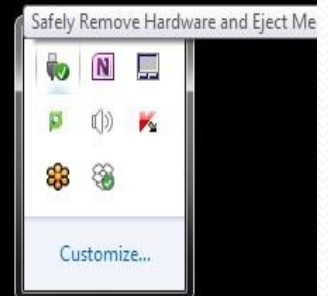
Location: Indigo Sky Casino

Start Time: 9 am



**SHAWNEE HISTORY SUMMIT**

Right click on the picture that looks like a flash drive.



9:55 AM  
9/9/2016



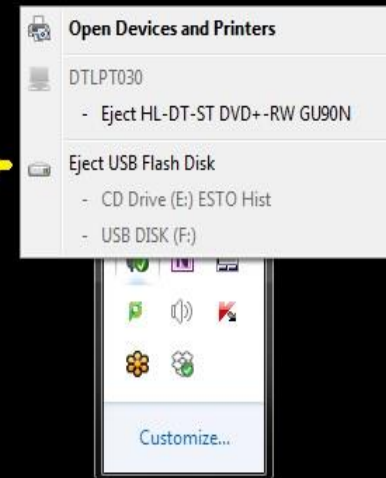


**Monday, September 19, 2016**

Location: Indigo Sky Casino  
Start Time: 9 am

 **SHAWNEE HISTORY SUMMIT**

Left click on Eject USB  
Flash Disk.





**Monday, September 19, 2016**

Location: Indigo Sky Casino

Start Time: 9 am



**SHAWNEE HISTORY SUMMIT**

Wait for this message.



**Safe To Remove Hardware**  
The 'USB Mass Storage Device' device can now be safely removed from the computer.

# Remove Flash Drive From USB Port



# Place Cap on Flash Drive





# Place in Presentation Tin

